



# HEATHER TEX

(EGYPT FZ)

MANUFACTURERS & EXPORTERS OF READYMADE GARMENTS

## COMPANY PROFILE



## Vision

To be the premium manufacturer & Exporter of sustainable & quality apparel in **EGYPT**

## Mission

- ❖ **HEATHER TEX EGYPT (FZ)** maintains a modern and efficient manufacturing facility in Alexandria Egypt. Our main purpose is to satisfy our customers and to be in the front with apparel industry's ever changing needs.

## Values

- ❖ We take responsibility for **QUALITY**
- ❖ We deliver **CUSTOMER SATISFACTION**
- ❖ We act with **INTEGRITY** in all we do
- ❖ Our **WORKERS** are our strength and we value them
- ❖ We regard our **SUPPLIERS** as our business partners





### ❖ **Our Products:**

- ❖ Knitwear – T-shirt, Leggings, Polo, Sleepwear, Hoodies, Sweatshirt, etc.
- ❖ Woven – Scrub Top & Bottoms, Workwear, etc.
- ❖ Line – Men's, Women's & Kidswear.
- ❖ Cotton and Cotton Blend Fabrics we source locally and Polyester/Polyester Blended fabrics we import from our Far East Mills/Vendor partners.

### ❖ **Why Heather Tex & Egypt:**

- ❖ DUTY FREE TO U.S.A – UNDER “Q.I.Z” AGREEMENT.
- ❖ DUTY FREE TO EUROPE – WITH “EUR-1”
- ❖ DUTY FREE TO AFRICA – UNDER “COMESA” AGREEMENT
- ❖ The Geographical location of Egypt is also a benefit to the Export / Import Market, it allows very short leads by sea to important buying destinations.
- ❖ Vsl Lead time to \*NY – 12 to 14 days, \*Europe – 4 to 7 days, etc..



### **OFFICE & FACTORY LOCATION:**

ROAD NO.5 , AMREYA PUBLIC FREE ZONE , ALEXANDRIA , EGYPT

TEL: +203-4500113 - 01000033478

E-MAIL: [info@heathertext.com](mailto:info@heathertext.com)

website: [www.heathertext.com](http://www.heathertext.com)







## COTTON TOPS



## COTTON BLENDS - PRODUCT RANGE



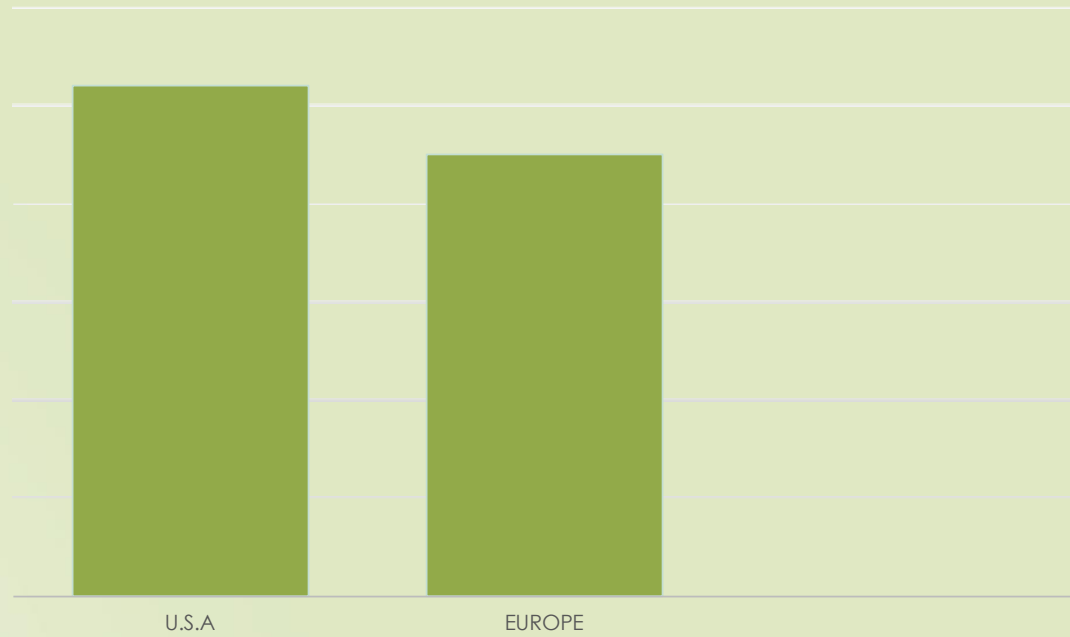
## ATHLEISURE PRODUCT RANGE



# EXPORT MATRIX & CAPACITY

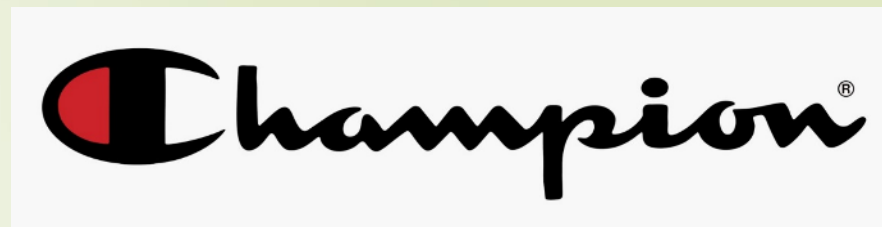
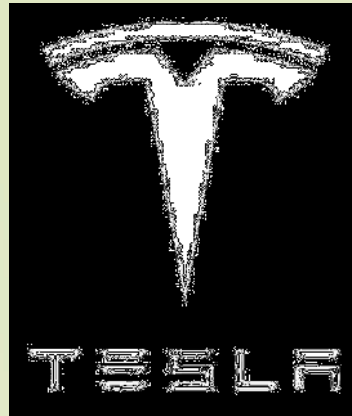
❖ USA –55%

❖ EUROPE -45%





## Brands



## Current Phase



## New Phase

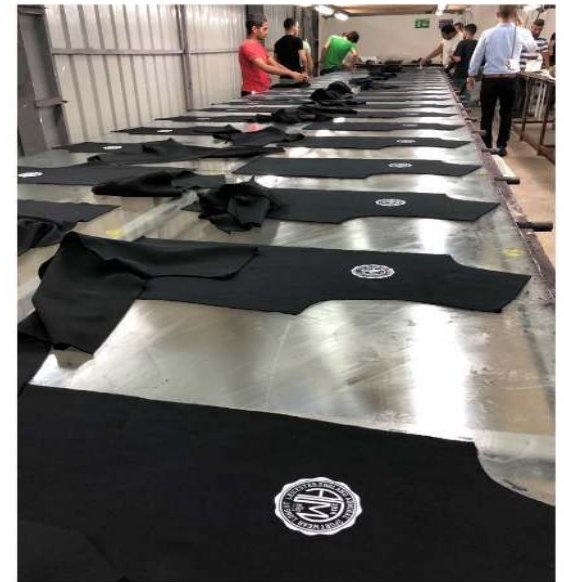
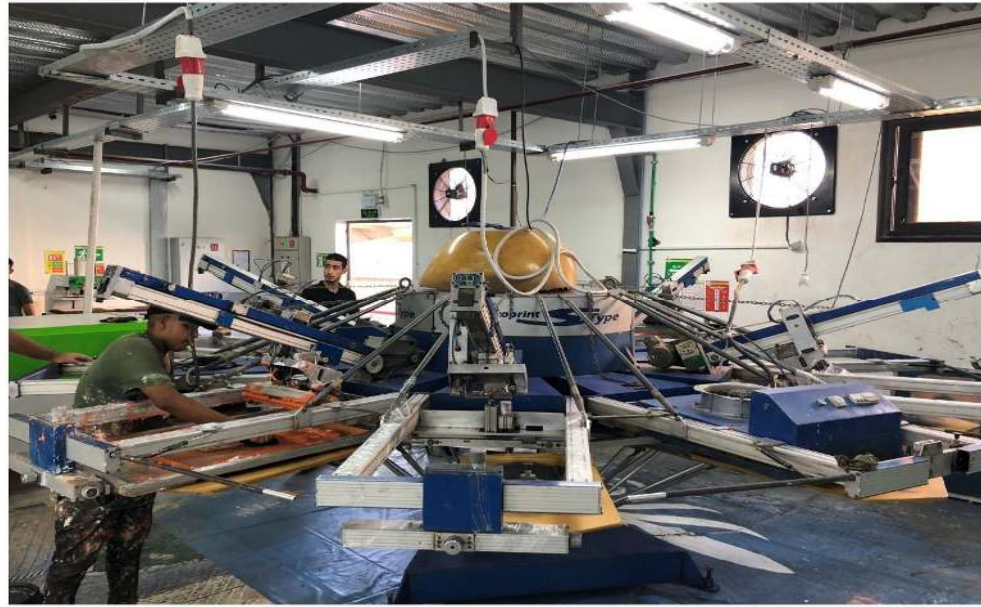


- Built on 6000 sq.mtr land parcel.
- Phase-I : 4,000 sq.mtr usable
- Phase-II : 6,000 sq.mtr usable

# IN-HOUSE PRINTING

MACHINE & MANUAL

- ❖ Printing Capacity - 8000 pcs per day
- ❖ Capability up to 12 colors



## LIST OF MACHINE

Machine Type	15/1/2023
SINGLE NEEDLE MACHINE	100
OVER LOCK MACHINE	115
↓ INTERLOCK MACHINE	
Medium cylinder 27	
Flat bed 17	71
Medium cylinder left cutter 20	
Medium cylinder with puller 4	
Small cylinder 3	
FLATSEAM MACHINE	12
WAIST BAND ELASTIC MACHINE	7
BUTTON HOLE MACHINE	4
BARTAK MACHINE	7
TWO NEEDLE LOCK STICH MACHINE	2
TWO NEEDLE CHAIN STICH MACHINE	2
SNAP BUTTON MACHINE	10
THREAD SUCION TRIMER MACHINE	9
CUTTING MACHINE	5
BAND KNIFE MACHINE	3
END CUTTER MACHINE	4
FABRIC LOOSENING MACHINE	1
FABRIC INSPECTION MACHINE	1
FUSHING MACHINE	1
SPOT REMOVEING MACHINE	2
↓ PRESS IRON WITH BOILERS	
Steam Boiler With Press Iron and Table (6 kw ) 13	31
Steam Boiler With Press Iron (1. 1/2 kw ) In Line 8	
Press Iron Steam with Bottel 10	
AUTO SPREADER MACHINE	1
PLOTTER MACHINE	2
PIPPING CUTTER MACHINE	3
HEAT TRANSPARENT MACHINE (Small Head, 15*15)	10
HEAT PRESS TRANSFERS MACHINE (Big Head, 40*30)	3
THREAD CLEANING MACHINE	6
MHM Print MACHINE	2
FLASH CURE	6
MHM STRECH MACHINE	1
MHM FILM POSTION	1
Dryer (WITH BELT) MACHINE	2
LAYER FABRIC DRILL MACHINE (power ful cloth)	1
PHOTO TRANSFER MACHINE	2
AIR COMPRESSER	3
AIR DRYER	2
STAPLE PIN ATTACHER MACHINE	1
THREAD REWINDER MACHINE	1
NEEDLE DETECTOR	1
NUMBER STICKER MACHINE	10
ELECTRICAL GENARATER	1
COLOR ASSESSMENT CABINET	1
WATER PRESSURE CLEAN MACHINE	1
<b>TOTTAL</b>	<b>448</b>



# SUSTAINABLE VISION & ADAPTATION



- ❖ USING OF LED LAMPS
- ❖ PLANNED SOLAR PANEL INSTALLATION BY 2024
- ❖ RE-USE & UPCYCLE - WASTE FABRIC (CUT PANEL)
- ❖ LESS USE OF PLASTIC

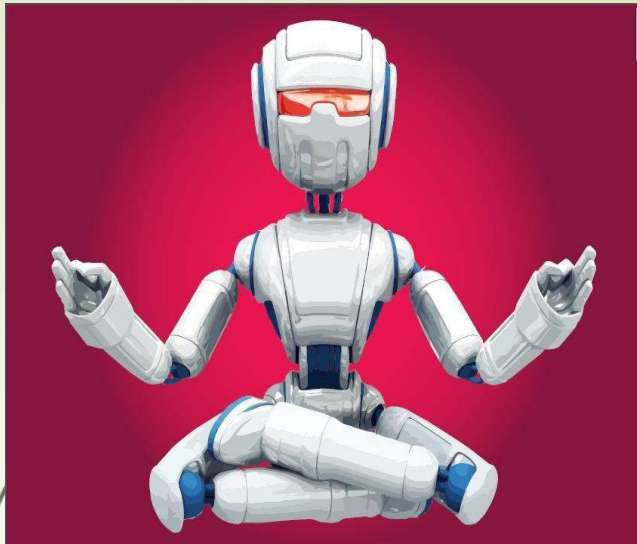
# SUSTAINABLE & ETHICAL MANUFACTURING

AIM 2023-2024

- \* ECO FRIENDLY
- \* NATURAL DYES
- \* ORGANIC YARNS
  - \* SAVE WATER
- \* FAIR TRADE (BCI)
- \* RE-CYCLED FABRICS
- \* RE-USE & UPCYCLE
- \* LESS WASTE



# AUTOMATION IS THE FUTURE



## ❖ USING AUTO FABRIC SPREADER

- \* Accuracy & aligned spreading of fabric

## ❖ IMPLIMENTATION OF AUTO CUTTER BY END OF 2024

- \* Increase efficiency & Fabric utility by 10-15%

## ❖ ERP SYSTEM BY END 2024 FOR DATA MONITORING

- \* Monitoring live feed of production and inventory.

## ❖ SUBLIMATION PRINTING BY End of 2024

## ❖ LATEST MH OCTOPUS PRINTING MACHINE – 12COLOR

- \* Expected in 2024 to increase daily capacity by 5000 pcs



## CERTIFICATIONS:



**HANES**  
*Brands Inc*

